

Ministry of Health and Long-Term Care Geographic Information System (GIS) Strategy

**An Overview of the Strategy Implementation Plan
November 2009**

John Hill, Health Analytics Branch
Health System Information Management and Investment Division
(HSIMI)

Presentation Goal

- Have a better understanding of MOHLTC's GIS Strategy.
- Specifically:
 1. Why the ministry is undertaking the strategy;
 2. What the ministry's vision is;
 3. What in practical terms this means;
 4. How this will benefit you (and others);
 5. Next steps in getting there; and
 6. Who is involved (and who you can contact if I haven't met today).

Why create a GIS Strategy?

Need:

- Ministry staff and stakeholders need to obtain accurate, timely, useful spatial information
- Health sector looks to ministry for GIS leadership
- Align with ministry's stewardship role (supporting key partners in health sector)

Challenges:

- Difficult to access and use authoritative data sets
- Lack of easy to use applications to access, analyze and visualize geographic data
- Different user needs and requirements
- Unrealized potential of GIS capabilities to support evidence-based decision making

Opportunities:

- Improve coordination in planning, developing and maintaining geographic data
- Easy access to a wide range of tools to facilitate data visualization, analysis and reporting
- Reduce duplication and improve efficiencies in delivering GIS products, tools and services, knowledge and skills

What is the Ministry's GIS Strategy vision?

The ministry will be recognized as a leader in supporting and using location-based information to make decisions for promoting health and providing health care excellence, now and in the future

Vision (cont.) GIS Strategy / IM Strategic Framework

Vision Statement

Ontario's health system will have and rely on the best possible data and information to make decisions for promoting health care excellence now and in the future.

Mission Statement

Working collaboratively, we develop, manage, and share high quality data, information and knowledge products with our customers and partners.

Overarching Principles

Sharing and Integrating Data

Empowering Evidence-Based Decisions

Building IM Capacity

Vision: The ministry will be recognized as a leader in supporting and using location-based information to make decisions for promoting health and providing health care excellence, now and in the future

Enhance Quality of Data

- Develop common standards for data collection
- Establish the authoritative source for GIS data
- Integrate non-spatial data with geographic data

Support Evidence-Based Decision making

- Enable easy access to and sharing of location-based data and information
- Improve GIS analytical capability to support decision making

Sustain GIS Capacity

- Establish a clear GIS governance framework
- Provide appropriate funding for staff
- Leverage existing GIS systems
- Embed GIS functionality in candidate and priority applications
- Raise awareness of potential for GIS to support health system goals

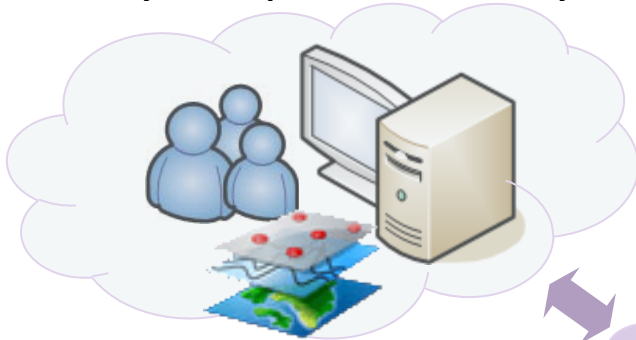
IM Strategic Directions

GIS Strategy

What is the proposed end-state?

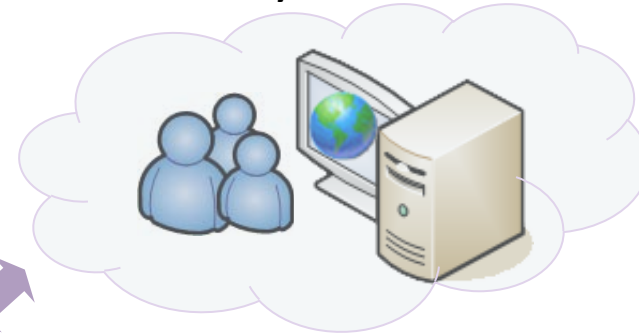
Below is a conceptual schematic on how the ministry will be delivering GIS products and services to ministry's staff and the broader stakeholder community:

Ministry's GIS Specialists and Analysts

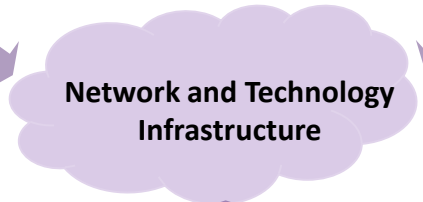


Create, edit and maintain GIS data via editing tool

Ministry & Partners



View and access GIS data via catalogue and web-based mapping applications



Standards, Policies and Data Sharing Agreements



Health System Databases

Business intelligence integration



Authoritative GIS Databases

Web-based mapping applications



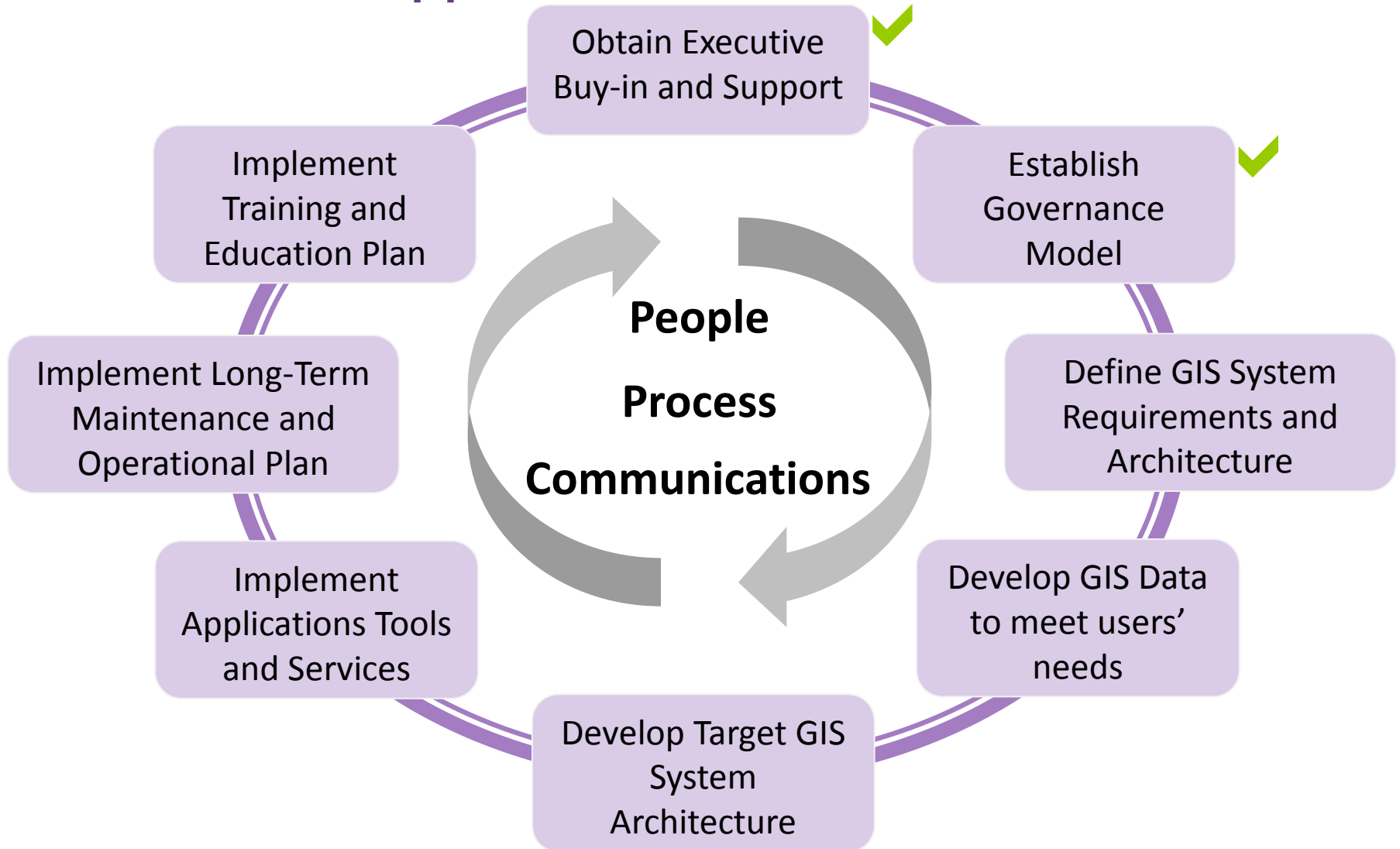
Web Application Servers



How will this benefit you?

Outputs	Services available to:			
	Stakeholders			
	Ministry	Primary	Secondary	Tertiary
1. GIS standards and best practices	Yes	Yes	Yes	Yes
2. Access to authoritative GIS data	Yes	Yes	Yes	Yes
3. Reliable, high quality and accurate GIS data for data analysis	Yes	Yes	Yes	No
4. Data sharing agreements and policies	Yes	Yes	Yes	Yes
5. Advice and guidance on analytical tools and services	Yes	Yes	Yes	No
6. Analytic support (i.e., perform analytic work)	Yes	Yes	No	No
7. Continuous enhancements on GIS capabilities, tools and technologies to accommodate emerging needs	Yes	Yes	Yes	Yes
8. Provide training and education	Yes	No	No	No

What is our approach?



Next steps

Focus on fundamental tasks in 2009-10, Q3 and Q4:

1. *Complete the Governance Model*

- Establish Steering Committee
- Initiate Technical Advisory Committee
- Kick-off meeting

2. *Communicate*

- Disseminating strategy to stakeholders

3. *Develop and adopt GIS data standards*

- Engaging stakeholders to capture users' requirements
- Establish metadata standards
- Establish authoritative datasets

Who is Involved?

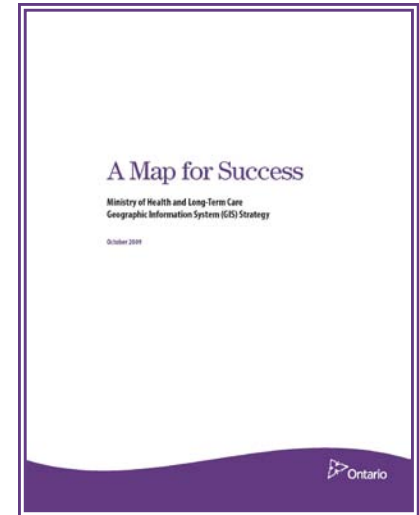
- Ministry plan; however, collaboration with stakeholders is essential
- HSIMI Division is leading the strategy implementation
- Health Analytics Branch manages the overall implementation
- Steering Committee includes: ministry leaders; Strategic Information Management Advisory Council (SIMAC) to represent stakeholders at high level
- Technical advisors represent stakeholders on the ground
- Implementation working teams focus in four priority areas:
 - Data management and access
 - Application tools and services
 - Infrastructure and technology
 - Stakeholder engagement and communication

For More Information...

- MOHLTC GIS Strategy Project Sponsor
 - John Hill, Health Analytics Branch
Tel: 416-327-8683
Email: john.r.hill@ontario.ca
- MOHLTC GIS Strategy Project Manager
 - Kevin Yam, Health Analytics Branch
Tel: 416-326-3151
Email: kevin.yam@ontario.ca

Appendix A: Executive Summary

- GIS is a key tool for evidence-based decision making
- A ministry GIS strategy will lead to:
 - Better **coordination, integration**, and use of GIS technology and spatial data
 - Improved **collaboration** across GIS users and information consumers
- Strategy focused on providing practical information and tools
- Strategy has been approved and the project team is moving ahead
- Implementation will take 3 to 5 years (longer term initiative)



Ministry of Health and Long-Term Care
GIS Strategy document

Appendix B: GIS Strategy Project Governance

